

Introduction

This installation guide gives instructions to setup your Technical Document Compact Disk (CD) as follows:

- TR/Bulletin/Notice of Errata Installation (CD)
- Update of Temporary Revisions (and Bulletins and Notice of Errata) (CD)
- Network Setup

Use these instructions to setup your system to access Temporary Revisions (TR's), Bulletins (BUL's), or Notice of Errata (NOE's) when you view the documents from the data CD's but do not use the Boeing Digital Technical Documents application. Instructions are also provided to setup your system to access documents and TR's (or BUL's or NOE's) from a hard drive or network server when you do not use the Boeing Digital Technical Documents application.

In the setup instructions, folder names that are in *[italicized brackets]* are variable names. The actual name of the folder you will create depends on the document or TR (or BUL or NOE) you are installing. Folders you create are in **bold**.

Temporary Revision/Bulletin/Notice of Errata Installation (Operation of Boeing Digital Technical Documents from a data CD)

A Temporary Revision (TR) is a technical publication that is issued between revision cycles as a supplement to a manual. Bulletins (BUL) and Notice of Errata (NOE) are similar to a TR but only apply to the Fault Reporting Manual (FRM). You must be able to easily find a TR (or BUL or NOE) when you use electronic documents.

Use this procedure to setup your computer to access TR's, BUL's, or NOE's when you operate Boeing Digital Technical Documents from the data CD without the application.

The instructions below will guide the user through the installation of a TR (or BUL or NOE). TR's (or BUL's or NOE's) are distributed on 3½" diskettes or downloadable from MyBoeingFleet.com. You must do these instructions before you can access TR's (or BUL or NOE) from a Technical Documents data CD. The instructions explain how to create a folder on your hard drive or network server where TR's (or BUL's or NOE's) are copied to.

When you have completed the sections below, you will have created folders with the following naming format and installed a TR (or BUL or NOE) in the tr (or bul or noe) folder:

For TR's - **C:\bdttd\[Document Number]\tr**

For Bulletin's - **C:\bdttd\[Document Number]\bul**

For Notice of Errata's - **C:\bdttd\[Document Number]\noe**

See [Figure 1](#) for an example of folders created for TR's.

TR, BUL, or NOE Setup Instructions

- (1) Open Windows Explorer.
- (2) Create a folder in the root directory of your hard drive (the C:\ drive) with the folder name of **bdttd**.
- (3) Create a folder in the **bdttd** folder you created in step 2 with the name format of *[Document Number]* (Example: d634t215).

NOTE: You can find the document number on the label on the floppy diskette that contains the TR (or BUL or NOE).

- (4) Create a folder in the [Document Number] folder you created in step 3 with the folder name of **tr** (for Temporary Revision's), **bul** (for Bulletin's), or **noe** (for Notice of Errata's).
- (5) The folders you created above should have the following path names:
For TRs - **C:\bdttd\[Document Number]\tr** (Example: C:\bdttd\d634t215\tr)
For BUL's - **C:\bdttd\[Document Number]\bul** (Example: C:\bdttd\d633a113\bul)
For NOE's - **C:\bdttd\[Document Number]\noe** (Example: C:\bdttd\d633a113\noe)

All TR's (or BUL's or NOE's) for a specific document number will be copied to the same **tr** (or **bul** or **noe**) folder.

Figure 1 shows an example of what your folders will look like in Windows Explorer when you finish this section (this example is for TR's for document number d634t215 and d634w210).

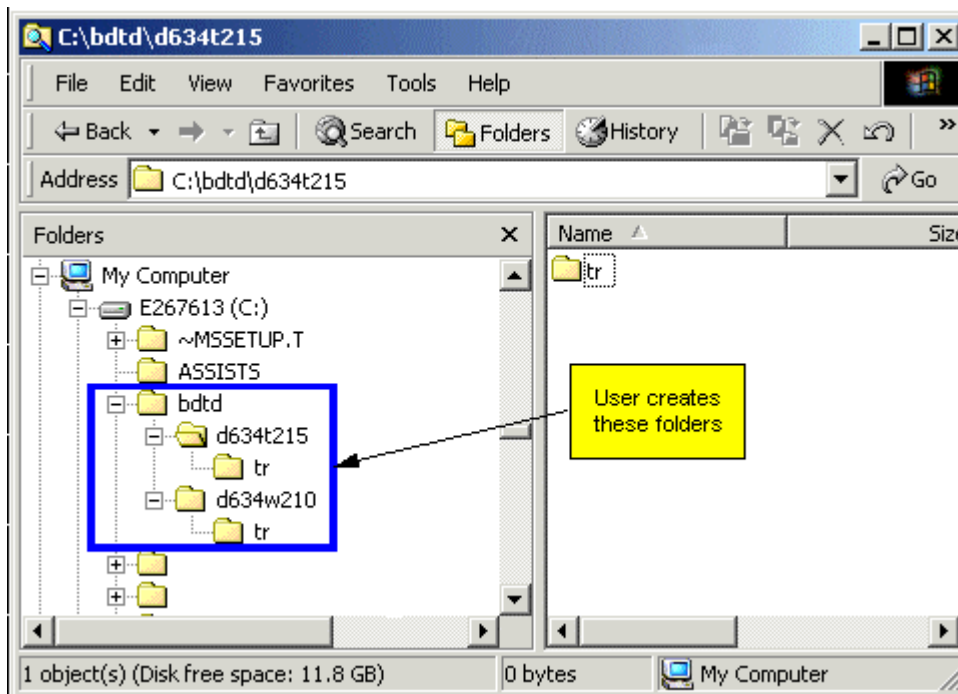


Figure 1

TR, BUL, or NOE Installation Instructions

- (1) Do the instructions that follow if you have a TR (or BUL or NOE) on a 3½" diskette:
 - (a) Insert the 3½" diskette in the local disk drive.
 - (b) Find the floppy disk drive in Windows Explorer (drive A:\).
 - (c) Use Windows Explorer to copy the raw PDF TR (or BUL or NOE) file from the diskette to the **tr** (or **bul** or **noe**) folder created above. All TR's (or BUL's or NOE's) for a specific document number will be copied to the same **tr** (or **bul** or **noe**) folder.
- (2) Do the instructions that follow if you have a TR (or BUL or NOE) that was downloaded from MyBoeingFleet.com.
 - (a) Use Windows Explorer to copy the TR (or BUL or NOE) to the **tr** (or **bul** or **noe**) folder.
 - (b) If the TR (or BUL or NOE) was downloaded as a zip archive (the file will have an extension of .pk3) extract the PDF file from the zip archive.

NOTE: The zip archive contains the PDF TR (or BUL or NOE) file and a file with a .tr3 file name extension. You must unzip the PDF file before you can view the TR (or BUL or NOE). You can use any unzip utility to unzip the PDF file. If you used the TR bundling feature

on MyBoeingFleet.com, it is possible there will be more than one TR (or BUL or NOE) in each zip archive. Make sure you extract TR's (or BUL's or NOE's) to the folder for the applicable document.

- (c) After you unzip the file, you can delete the .tr3 file and the .pk3 zip archive from the **tr (or bul or noe)** folder.

Update of Temporary Revision's/Bulletin's/Notice of Errata's (Operation of Boeing Digital Technical Documents from a CD)

Follow the instructions to add Temporary Revision's (TR's) or Bulletin's (BUL's) or Notice of Errata's (NOE's).

TR, BUL, or NOE Installation Instructions

You must first delete the existing TR's (or BUL's or NOE's) that do not apply. Follow standard airline practices to determine if a TR (or BUL or NOE) applies.

- (1) Delete existing TR's (or BUL's or NOE's) that do not apply that you find in the **tr (or bul or noe)** folder on your local hard drive (See [Figure 2](#) for an example of a **tr** folder).
- (2) Do the instructions that follow if you have a TR (or BUL or NOE) on a 3½" diskette:
 - (a) Insert the 3½" diskette in the local disk drive.
 - (b) Find the floppy disk drive in Windows Explorer (drive A:\).
 - (c) Use Windows Explorer to copy the raw PDF TR (or BUL or NOE) file from the diskette to the **tr (or bul or noe)** folder created above.
- (3) Do the instructions that follow if you have a TR (or BUL or NOE) that was downloaded from MyBoeingFleet.com.
 - (a) Use Windows Explorer to copy the TR (or BUL or NOE) to the **tr (or bul or noe)** folder.
 - (b) If the TR (or BUL or NOE) was downloaded as a zip archive (the file will have an extension of .pk3) extract the PDF file from the zip archive.

NOTE: The zip archive contains the PDF TR (or BUL or NOE) file and a file with a .tr3 file name extension. You must unzip the PDF file before you can view the TR (or BUL or NOE). You can use any unzip utility to unzip the PDF file. If you used the TR bundling feature on MyBoeingFleet.com, it is possible there will be more than one TR (or BUL or NOE) in each zip archive. Make sure you extract TR's (or BUL's or NOE's) to the folder for the applicable document.

- (c) After you unzip the file, you can delete the .tr3 file and the .pk3 zip archive from the **tr (or bul or noe)** folder.

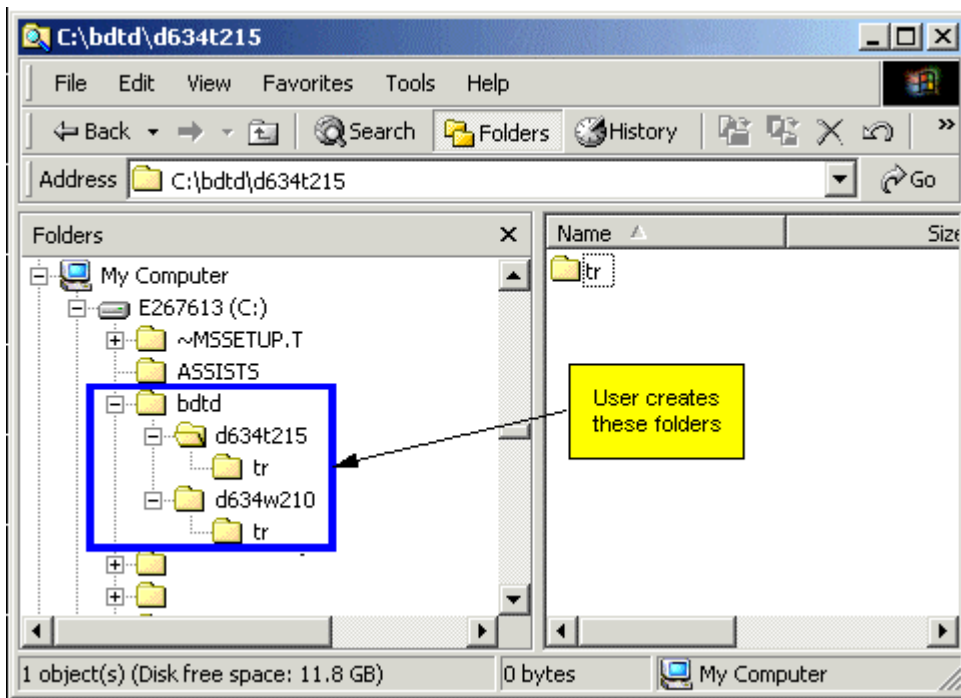


Figure 2

Data CD Contents

Each data CD contains folders and files that allow you to setup the document for use on a network server without the Technical Documents application installed. This section describes the contents of the data CD. It is necessary to be familiar with the contents of the data CD's to install the document on a network server. There are three possible configurations of data CD's described in this section:

- One part document on one CD.
- One part document on multiple CD's.
- Two part document on one CD.

A one part document on one CD is a document that is small enough to fit entirely on a CD and only contains one part (for example, 737-100/200 SRM or 747 AMM). Some one part documents are too large to fit entirely on one CD and require multiple CD's (for example, 767 AIPC). Some documents are provided as two part documents (for example, 737-600/700/800/900 AMM or all WDM's that include the EDP).

All data CD's contain one or more book unique id folders (one for each part of the document on a CD). Each book unique id folder name contains the document number of the document. See [Figure 3](#) for an example of the book unique id folder.

The PDF folder located inside the book unique id folder contains the document PDF files and the index file and folders for the search function. See [Figure 4](#) for an example of the PDF folder and document files.

The Network folder contains the network version of the Chapterlist, and for two part documents it also contains the Documentlist. The Chapterlist and Documentlist provide navigation to the chapters of a document copied to a hard drive or network server and access to the Temporary Revisions (or Bulletins or Notice of Errata for Fault Reporting Manuals). Multiple Chapterlist files are provided for two part documents. The file with the name format of CHAPTERLIST_[ACRONYM]-NET.PDF (for example CHAPTERLIST_PP-NET.PDF) is used when you want to only copy one part of a two part document to a

server. The files with the name format of DOCUMENTLIST.PDF and CHAPTERLIST_[ACRONYM]-NET-ALL.PDF (for example CHAPTERLIST_PP-NET-ALL.PDF) are used when you want to copy both parts of a two part document to a server. See Figure 5 for the NETWORK folder and chapterlist for a one part document. See Figure 6 for the NETWORK folder, Documentlist, and Chapterlist for a two part document.

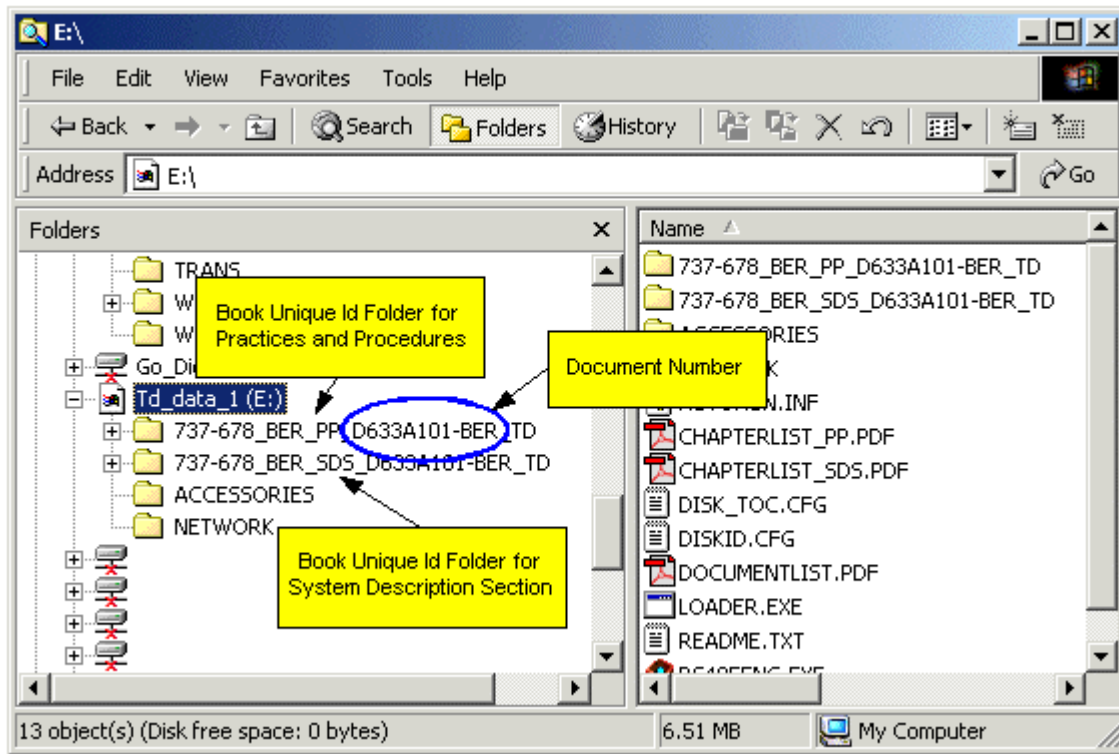


Figure 3

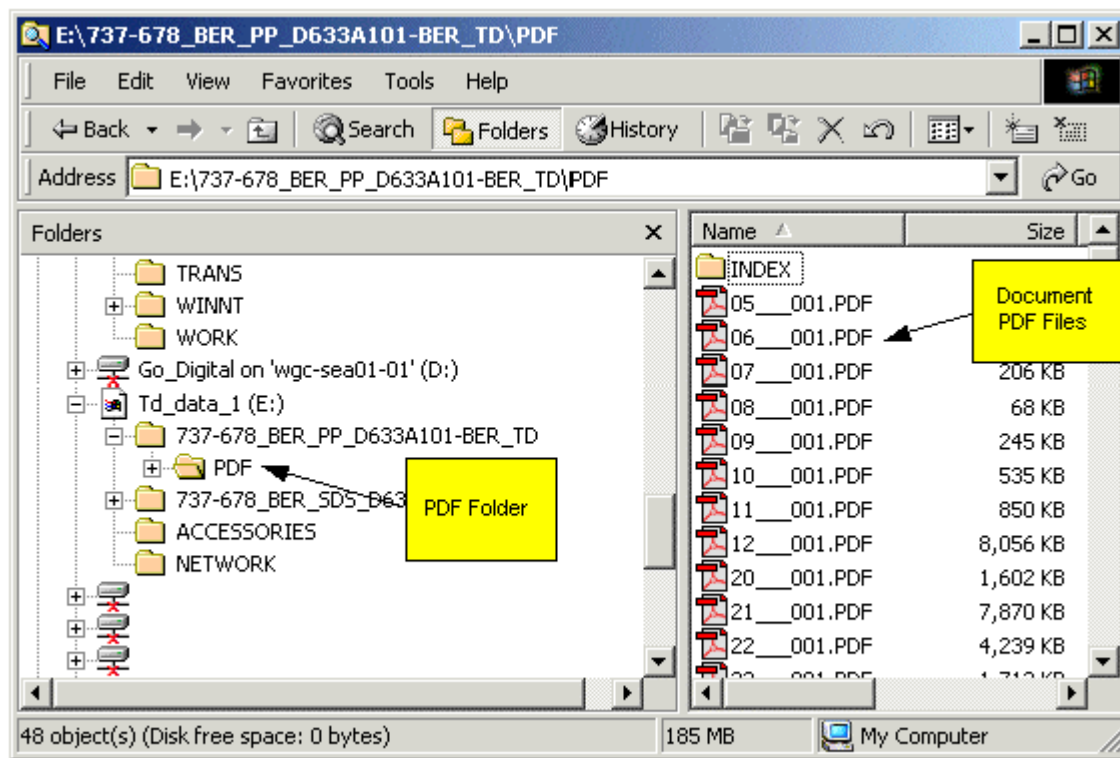


Figure 4

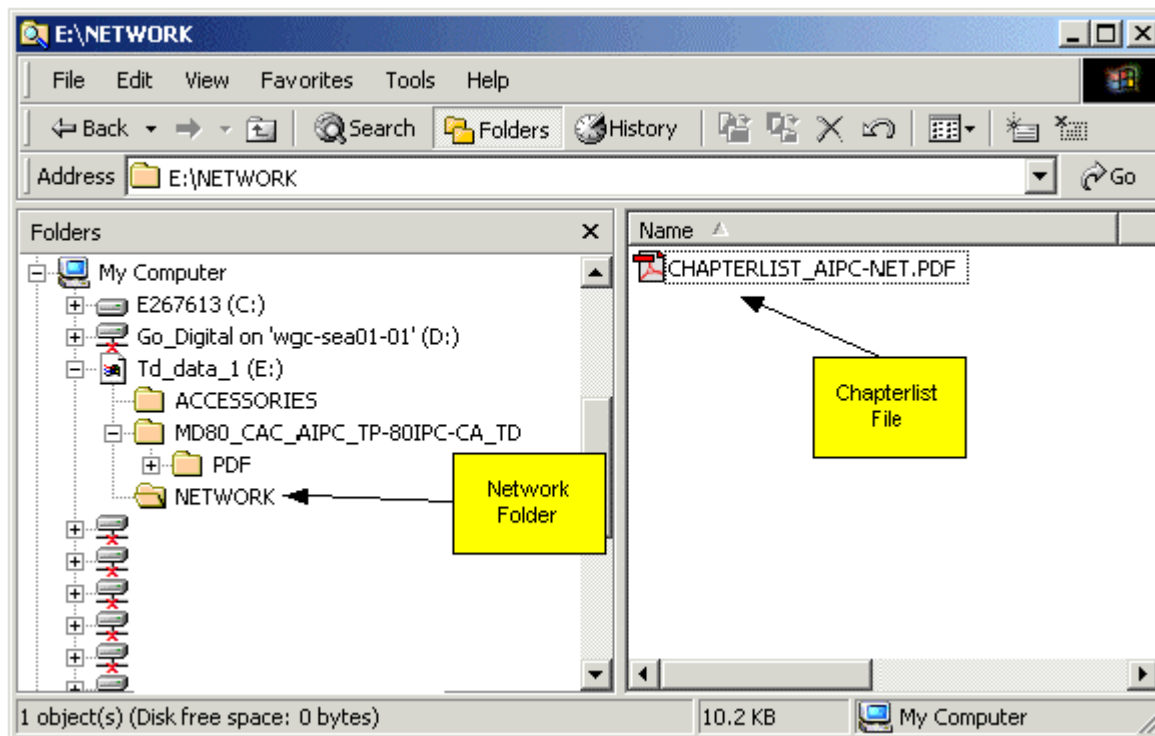


Figure 5

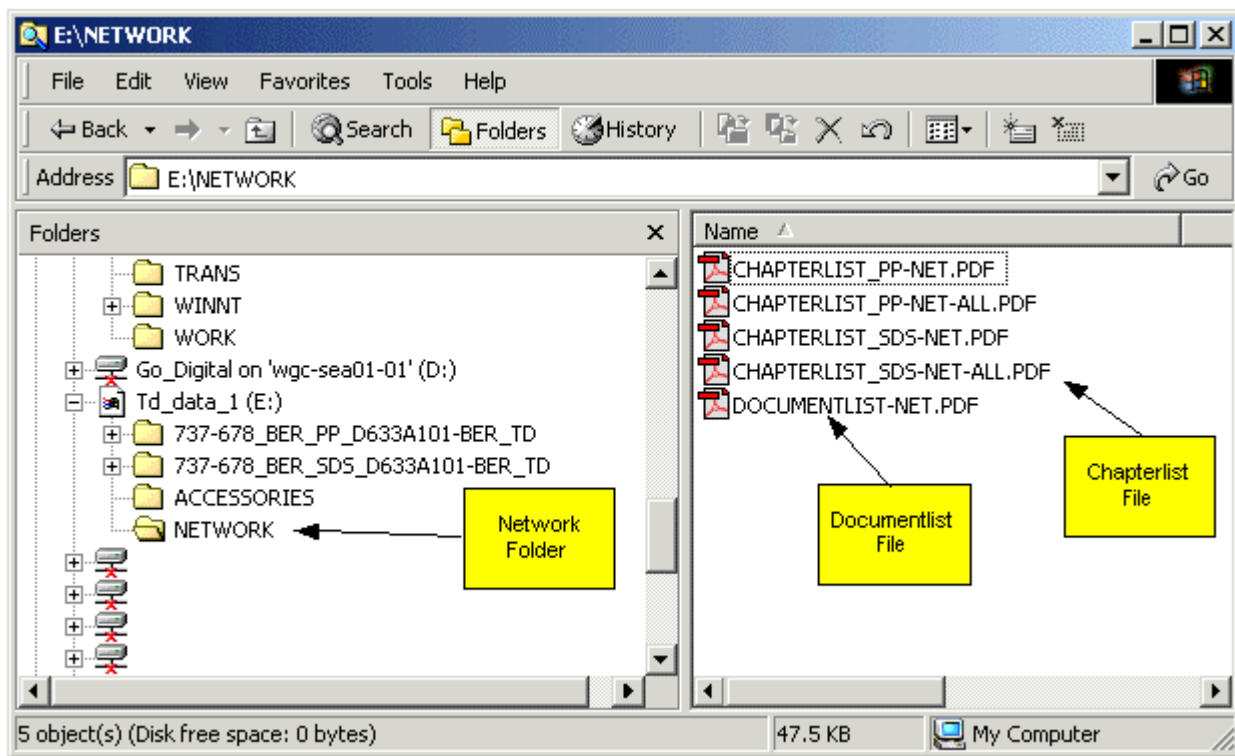


Figure 6

Network Setup (One Part Document on One CD)

Introduction

Follow the instructions in this section the first time you setup your Technical Documents on a network for single part documents that are provided on a single CD. A single part document (e.g. 737-300 SRM) will only have one book unique id folder on the CD. Follow these instructions to create directories in the location where your data will reside on a hard drive or network server and to copy the directories and files from the CD for the first setup of your Technical Document on your network.

If you want to install subsequent revisions to documents already set up on your network, see the Network Update section.

Before you begin this setup you must find a place on your network server or local hard drive that has enough disk space for the documents you want to copy onto the server. Contact your network administrator to determine your disk space requirements.

The following instructions require that you understand the contents of the Boeing Digital Technical Documents data CD. See the [Data CD Contents](#) section for information on the contents of the data CD.

Network Setup

- (1) Insert the Boeing Digital Technical Document CD into the CD drive.

NOTE: Adobe Reader will automatically start when you insert the CD if the Technical Documents and Portable Maintenance Aid applications are not installed. Close the Adobe Reader and open Windows Explorer.

- (2) Use Windows Explorer and create these folders on your network server (See [Figure 7](#)):

- (a) Create a folder with the name format of *[MODEL MANUAL]* (for example, 747AMM, 737-500SRM, etc) at any directory level on your network server for each document you want to put on the network server.
 - (b) In the *[MODEL MANUAL]* folder created in step (2) (a) above, create a folder with the name format of the *[DOCUMENT NUMBER]*, for each document that applies to that model manual.
NOTE: You can find the document number in the file name of the book unique id folder in the root directory on the CD (See the [Data CD Contents](#) section for information on the document number).
 - (c) In the *[DOCUMENT NUMBER]* folder you created in step 2b above, create a folder with the folder name of **tr** (for Temporary Revisions), **bul** (for Bulletins), or **noe** (for Notice of Errata's). Bulletins and Notice of Errata's are for Fault Reporting Manuals (FRM) only.
- (3) Select the CD drive from Windows Explorer.
 - (4) From the CD, copy the *[BOOK UNIQUE ID]* folder and all the files and folders inside the book unique id folder, to the *[DOCUMENT NUMBER]* folder on the network server you created in step (2) (b).
 - (5) From the CD, copy the NETWORK folder and all the files and folders inside this folder from the CD to the *[DOCUMENT NUMBER]* folder on the network server you created in step (2) (b).
 - (6) From the CD, copy the ACCESSORIES folder and all files inside this folder from the CD to the *[DOCUMENT NUMBER]* folder on the network server you created in step (2) (b).
 - (7) Open the *[BOOK UNIQUE ID]* folder that you copied to your network server in step 4.
 - (8) Delete the manual.cfg and segmentlist.txt files.
 - (9) Open the NETWORK folder that you copied to your network server in step 5.
 - (10) Copy the file with the file format of CHAPTERLIST_*[ACRONYM]*-NET.PDF (Example: CHAPTERLIST_SRM-NET.PDF) from the NETWORK folder into the *[DOCUMENT NUMBER]* folder you created in step (2) (b).
NOTE: The CHAPTERLIST_*[ACRONYM]*-NET.PDF file is the network version of the chapterlist located on the root directory of the CD. The network version of the chapterlist provides navigation into the chapters of a document copied to a network and access to the **tr** folder you created in step (2) (c) above.
 - (11) Open the *[DOCUMENT NUMBER]* folder you created in step (2) (b).
 - (12) Rename the CHAPTERLIST_*[ACRONYM]*-NET.PDF file you copied to the *[DOCUMENT NUMBER]* folder in step 10 to the file format of CHAPTERLIST_*[ACRONYM]*.PDF (Example: CHAPTERLIST_SRM.PDF).
NOTE: The files are read only. If you receive a message asking to confirm the file name change, select Yes.
 - (13) To open the document, double click the CHAPTERLIST_*[ACRONYM]*.PDF (Example: CHAPTERLIST_SRM.PDF) file on the network server.

[Figure 7](#) shows an example of an MD-80 AIPC that is installed on a network server.

When you finish this section the Network Setup is complete.

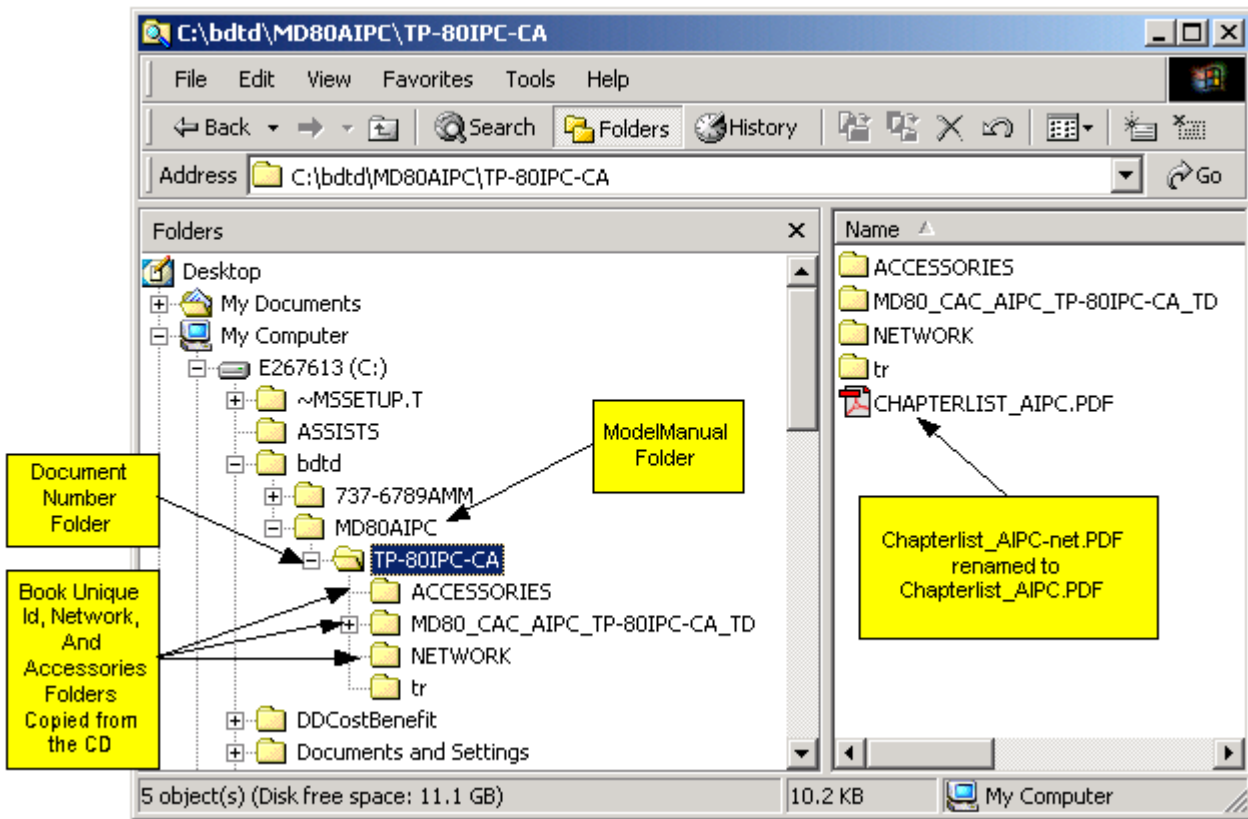


Figure 7

Network Setup (One Part Document on Multiple CD's)

Introduction

Follow the instructions in this section the first time you setup your Technical Documents on a network for one part documents that are located on multiple CD's (for example, documents large enough to require two or more CD's). A one part document (e.g. 737-300 SRM) will only have one book unique id folder on each CD. Follow these instructions to create directories in the location where your data will reside on a hard drive or network server and to copy the directories and files from the CD for the first setup of your Technical Document on your network.

If you want to install subsequent revisions to documents already set up on your network, see the Network Update section.

Documents that require multiple CD's will have part of the document on each CD. Each CD will also contain informational PDF files that will have the same name as the actual document files that are located on the other CD's. For example, the 747 AMM, revision number 121, contains Front Matter through chapter 80 (file name examples: The Front Matter file name is fm__121.pdf and the file name for chapter 80 is 80__121.pdf). If the document requires two CD's, the Front Matter through chapter 49 may be on CD 1 and chapter 51 through chapter 80 may be on CD 2. The PDF folder on Disc 1 of # (for example Disc 1 of 2) will contain PDF files with file names for the complete document (e.g. fm__121.pdf through 80__121.pdf). But in this example, the files fm__121.pdf through 49__121.pdf contain PDF files for the actual document and files 51__121.pdf through 80__121.pdf are the informational PDF files. You can look at the file size in Windows Explorer to identify which files are informational files. The informational pages are provided for use when navigating to a chapter from the CD. The informational pages are not used when you access a document that is copied to a network. The informational files are

150 Kilobytes (KB) or less in size. The informational files will be deleted from the network after you copy them off the CD. [Figure 8](#) shows an example of the file size of the informational pages.

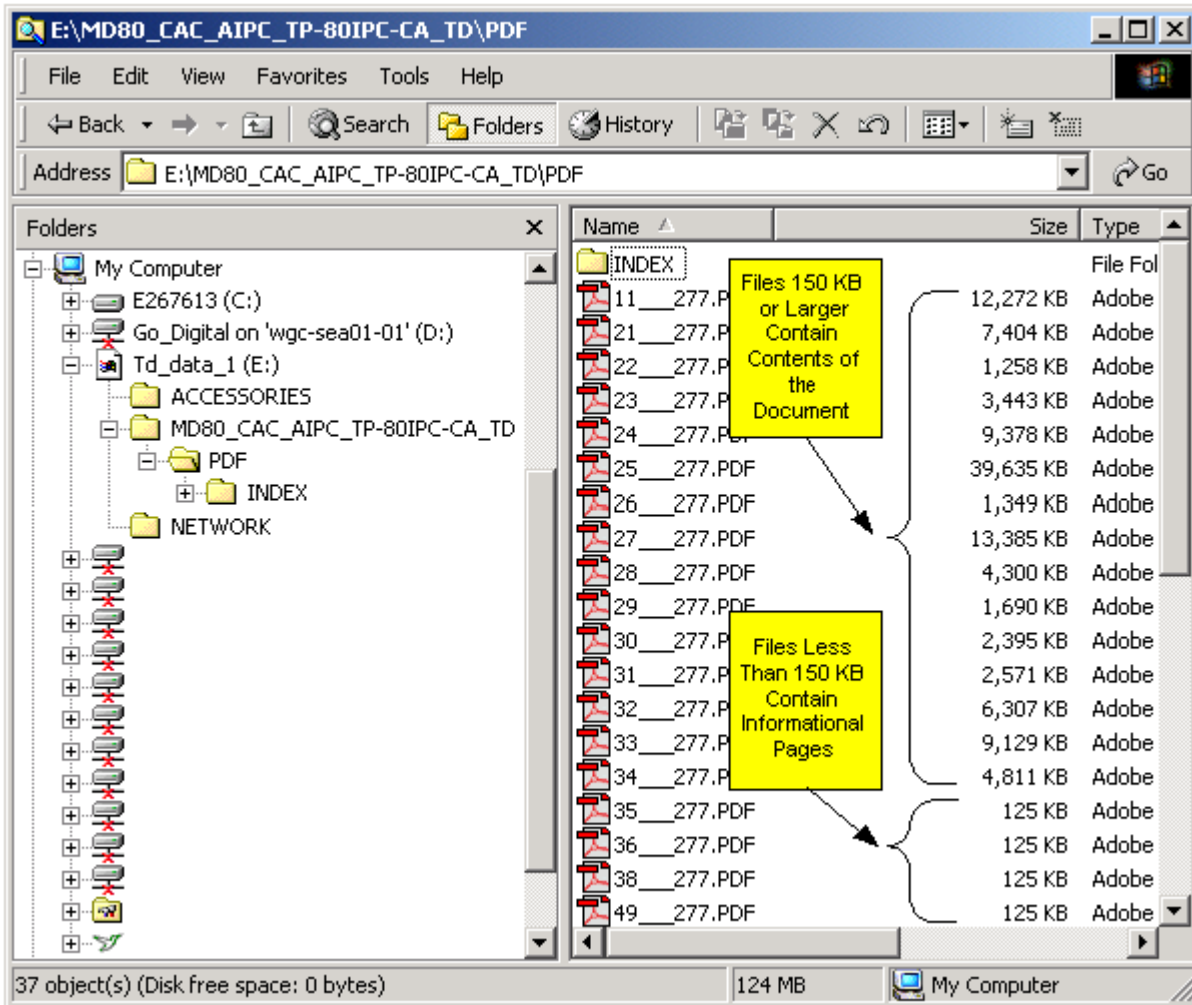


Figure 8

Before you begin this setup you must find a place on your network server or local hard drive that has enough disk space for the documents you want to copy onto the server. Contact your network administrator to determine your disk space requirements.

The following instructions require that you understand the contents of the Boeing Digital Technical Documents data CD. See the [Data CD Contents](#) section for information on the contents of the data CD.

Network Setup

- (1) Insert the first Boeing Digital Technical Document CD into the CD drive (for example, the first CD will be labeled Disc 1 of 3).
 NOTE: Adobe Reader will automatically start when you insert the CD if the Technical Documents and Portable Maintenance Aid applications are not installed. Close the Adobe Reader and open Windows Explorer.
- (2) Use Windows Explorer and create these folders on your network server (See [Figure 9](#)):
 - (a) Create a folder with the name format of *[MODEL MANUAL]* (for example, 747AMM, 737-500SRM, etc) at any directory level on your network server for each document you want to put on the network server.

- (b) In the [MODEL MANUAL] folder created in step (2) (a) above, create a folder with the name format of the [DOCUMENT NUMBER], for each document that applies to that model manual.
NOTE: You can find the document number in the file name of the book unique id folder in the root directory on the CD (See the [Data CD Contents](#) section for information on the document number).
 - (c) In the [DOCUMENT NUMBER] folder you created in step 2b above, create a folder with the folder name of **tr** (for Temporary Revisions), **bul** (for Bulletins), or **noe** (for Notice of Errata's). Bulletins and Notice of Errata's are for Fault Reporting Manuals (FRM) only.
- (3) Select the CD drive from Windows Explorer.
 - (4) From the first CD, do these steps:
 - (a) Copy the [BOOK UNIQUE ID] folder and all the files and folders inside the book unique id folder, to the [DOCUMENT NUMBER] folder on the network server you created in step (2) (b).
 - (b) Copy the NETWORK folder and all the files and folders inside this folder from the CD to the [DOCUMENT NUMBER] folder on the network server you created in step (2) (b).
 - (c) Copy the ACCESSORIES folder and all files inside this folder from the CD to the [DOCUMENT NUMBER] folder on the network server you created in step (2) (b).
 - (5) From the network server, do these steps:
 - (a) Open the [BOOK UNIQUE ID] folder that you copied to your network server in step (4) (a).
 - (b) Delete the manual.cfg and segmentlist.txt files.
 - (c) Open the PDF folder in the [BOOK UNIQUE ID] folder and delete all the .pdf files that are 150KB or less in size (these are the informational pages).
 - (d) Open the NETWORK folder that you copied to your network server in step (4) (a).
 - (e) Copy the file with the file format of CHAPTERLIST_[ACRONYM]-NET.PDF (Example: CHAPTERLIST_SRM-NET.PDF) from the NETWORK folder into the [DOCUMENT NUMBER] folder you created in step (2) (b).
NOTE: The CHAPTERLIST_[ACRONYM]-NET.PDF file is the network version of the chapterlist located on the root directory of the CD. The network version of the chapterlist provides navigation into the chapters of a document copied to a network and access to the **tr** folder you created in step (2) (c) above.
 - (f) Open the [DOCUMENT NUMBER] folder you created in step (2) (b).
 - (g) Rename the CHAPTERLIST_[ACRONYM]-NET.PDF file you copied to the [DOCUMENT NUMBER] folder in step (5) (e) to the file format of CHAPTERLIST_[ACRONYM].PDF (Example: CHAPTERLIST_SRM.PDF).
NOTE: The files are read only. If you receive a message asking to confirm the file name change, select Yes.
 - (6) Insert the second Boeing Digital Technical Document CD into the CD drive.
 - (7) Open the PDF folder in the [BOOK UNIQUE ID] folder on the CD.
 - (8) Copy all the PDF files that are larger than 150KB to the PDF folder on the network.
NOTE: You will see a dialog box asking if you want to replace existing files. Select Replace All.
 - (9) Follow steps (6), (7) and (8) above for any other CD's in the disk set.
 - (10) To open the document, double click the CHAPTERLIST_[ACRONYM].PDF (Example: CHAPTERLIST_SRM.PDF) file on the network server.

[Figure 9](#) shows an example of an AIPC that is installed on a network server.

When you finish this section the Network Setup is complete.

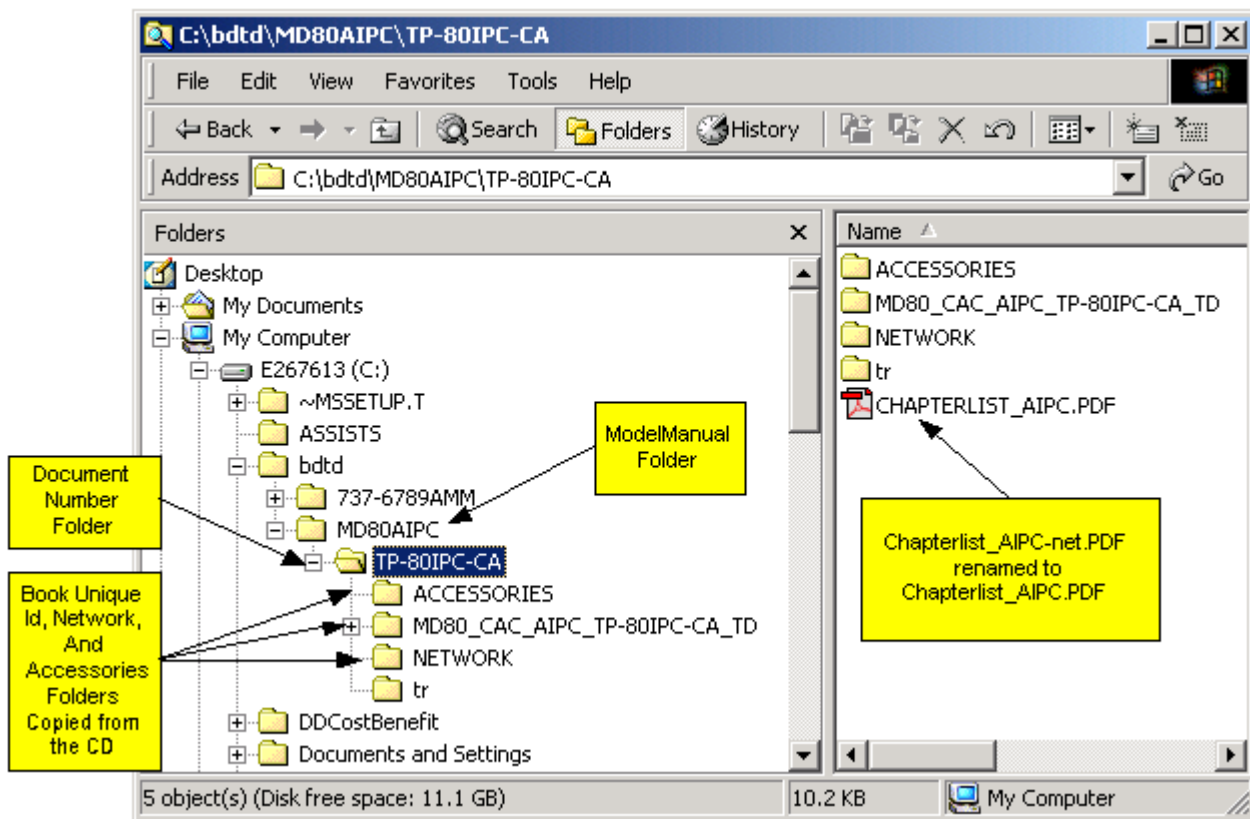


Figure 9

Network Setup (Two Part Documents on One CD)

Introduction

Follow the instructions in this section the first time you setup your Technical Documents on a network for multiple part documents that are located on one CD. A two part document (e.g. 737-600/700/800/900 AMM) will have more than one book unique id folder on the CD. Each part of the document will be located in a separate book unique id folder. You can setup multiple part documents on a network to access one part of the two part document, or both parts. Follow these instructions to create directories in the location where your data will reside on a network hard drive and to copy the directories and files from the CD for the first setup of your Technical Document on your network.

If you want to install subsequent revisions to documents already set up on your network, see the Network Update section.

Before you begin this setup you must find a place on your network server or local hard drive that has enough disk space for the documents you want to copy onto the server. Contact your network administrator to determine your disk space requirements.

The following instructions require that you understand the contents of the Boeing Digital Technical Documents data CD. The book unique id folder on the CD contains the PDF files for a document. If the document is a multiple part document, there will be one book unique id folder for each part of the document. See the [Data CD Contents](#) section for information on the contents of the data CD.

Network Setup

- (1) Insert the first Boeing Digital Technical Document CD into the CD drive.

NOTE: Adobe Reader will automatically start when you insert the CD if the Technical Documents and Portable Maintenance Aid applications are not installed. Close the Adobe Reader and open Windows Explorer.

- (2) Use Windows Explorer and create these folders on your network server (See [Figure 10](#)):
 - (a) Create a folder with the name format of *[MODEL MANUAL]* (for example, 737-6789AMM, 757WDM, etc) at any directory level on your network server for each document you want to put on the network server (for multiple part documents you will only create one folder).
 - (b) In the *[MODEL MANUAL]* folder created in step (2) (a) above, create a folder with the name format of the *[DOCUMENT NUMBER]*, for each document that applies to that model manual.

NOTE: You can find the document number in the file name of the book unique id folder in the root directory on the CD (See the [Data CD Contents](#) section for information on the document number).

- (c) In the *[DOCUMENT NUMBER]* folder you created in step (2) (b) above, create a folder with the folder name of **tr** (for Temporary Revision's), **bul** (for Bulletin's), or **noe** (for Notice of Errata's). Bulletin's and Notice of Errata's are for Fault Reporting Manuals (FRM) only.
- (3) Select the CD drive from Windows Explorer.
 - (4) If you want to copy the complete document (for example, part 1 and part 2 of a 2 part document) from the CD to the network, do the steps that follow:
 - (a) Copy all the *[BOOK UNIQUE ID]* folders and all the files and folders inside the book unique id folder from the CD to the *[DOCUMENT NUMBER]* folder on the network server you created in step (2) (b).
 - (b) Copy the NETWORK folder and all the files and folders inside this folder from the CD to the *[DOCUMENT NUMBER]* folder on the network server you created in step (2) (b).
 - (c) Copy the ACCESSORIES folder and all files inside this folder from the CD to the *[DOCUMENT NUMBER]* folder on the network server you created in step (2) (b).
 - (d) From the network server, do the steps that follow:
 - 1) Open the first *[BOOK UNIQUE ID]* folder that you copied to your network server in step (4) (a).
 - 2) Delete the manual.cfg and segmentlist.txt files.
 - 3) Open the second *[BOOK UNIQUE ID]* folder that you copied to your network server in step (4) (a).
 - 4) Delete the manual.cfg and segmentlist.txt files.
 - 5) Open the NETWORK folder that you copied to your network server in step (4) (b).
 - 6) Copy the DOCUMENTLIST-NET.PDF file from the NETWORK folder into the *[DOCUMENT NUMBER]* folder you created in step (2) (b).
 - 7) Copy the files with the file format of CHAPTERLIST_*[ACRONYM]*-NET-ALL.PDF (Example: CHAPTERLIST_SDS-NET-ALL.PDF and CHAPTERLIST_PP-NET-ALL.PDF) from the NETWORK folder into the *[DOCUMENT NUMBER]* folder you created in step (2) (b).

NOTE: The CHAPTERLIST_*[ACRONYM]*-NET-ALL.PDF file is the network version of the chapterlist located on the root directory of the CD. The network version of the chapterlist provides navigation into the chapters of a document copied to a network and access to the **tr** folder you created in step (2) (c) above.
 - 8) Open the *[DOCUMENT NUMBER]* folder you created in step (2) (b).
 - 9) Rename the DOCUMENTLIST-NET.PDF file you copied to the *[DOCUMENT NUMBER]* folder in step (4) (d) 6) to DOCUMENTLIST.PDF.

NOTE: The files are read only. If you receive a message asking to confirm the file name change, select Yes.
 - 10) Rename the CHAPTERLIST_*[ACRONYM]*-NET-ALL.PDF files you copied to the *[DOCUMENT NUMBER]* folder in step (4) (d) 7) to the file format of

CHAPTERLIST_*[ACRONYM]*.PDF (Example: CHAPTERLIST_SDS.PDF and CHAPTERLIST_PP.PDF).

NOTE: The files are read only. If you receive a message asking to confirm the file name change, select Yes.

11) To open the document, double click the DOCUMENTLIST.PDF file on the network server.

When you finish this section the Network Setup is complete for one part of a two part document.

- (5) If you want to copy one part (for example, part 1 only of a 2 part document) from the CD to the network server, do the steps that follow:
- (a) Copy the *[BOOK UNIQUE ID]* folder and all the files and folders inside the book unique id folder, for the part of the document you want to copy to the server, from the CD to the *[DOCUMENT NUMBER]* folder on the network server you created in step (2) (b).
 - (b) Copy the NETWORK folder and all the files and folders inside this folder from the CD to the *[DOCUMENT NUMBER]* folder on the network server you created in step (2) (b).
 - (c) Copy the ACCESSORIES folder and all files inside this folder from the CD to the *[DOCUMENT NUMBER]* folder on the network server you created in step (2) (b).
 - (d) From the network server, do the steps that follow:
 - 1) Open the *[BOOK UNIQUE ID]* folder that you copied to your network server in step (5) (a).
 - 2) Delete the manual.cfg and segmentlist.txt files.
 - 3) Open the NETWORK folder that you copied to your network server in step (5) (b).
 - 4) Copy the file with the file format of CHAPTERLIST_*[ACRONYM]*-NET.PDF (Example: CHAPTERLIST_SDS-NET.PDF) from the NETWORK folder, for the part of the document you are setting up on the network, into the *[DOCUMENT NUMBER]* folder you created in step (2) (b).

NOTE: The CHAPTERLIST_*[ACRONYM]*-NET.PDF file is the network version of the chapterlist located on the root directory of the CD. The network version of the chapterlist provides navigation into the chapters of a document copied to a network and access to the **tr** folder you created in step (2) (c) above.
 - 5) Open the *[DOCUMENT NUMBER]* folder you created in step (2) (b).
 - 6) Rename the CHAPTERLIST_*[ACRONYM]*-NET.PDF file you copied to the *[DOCUMENT NUMBER]* folder in step (5) (d) 4) to the file format of CHAPTERLIST_*[ACRONYM]*.PDF (Example: CHAPTERLIST_SDS.PDF).

NOTE: The files are read only. If you receive a message asking to confirm the file name change, select Yes.
 - (e) To open the document, double click the CHAPTERLIST_*[ACRONYM]*.PDF (Example: CHAPTERLIST_SDS.PDF) file on the network server.

When you finish this section the Network Setup is complete for two parts of a two part document.

Figure 10 shows an example of an AMM installed on a network server.

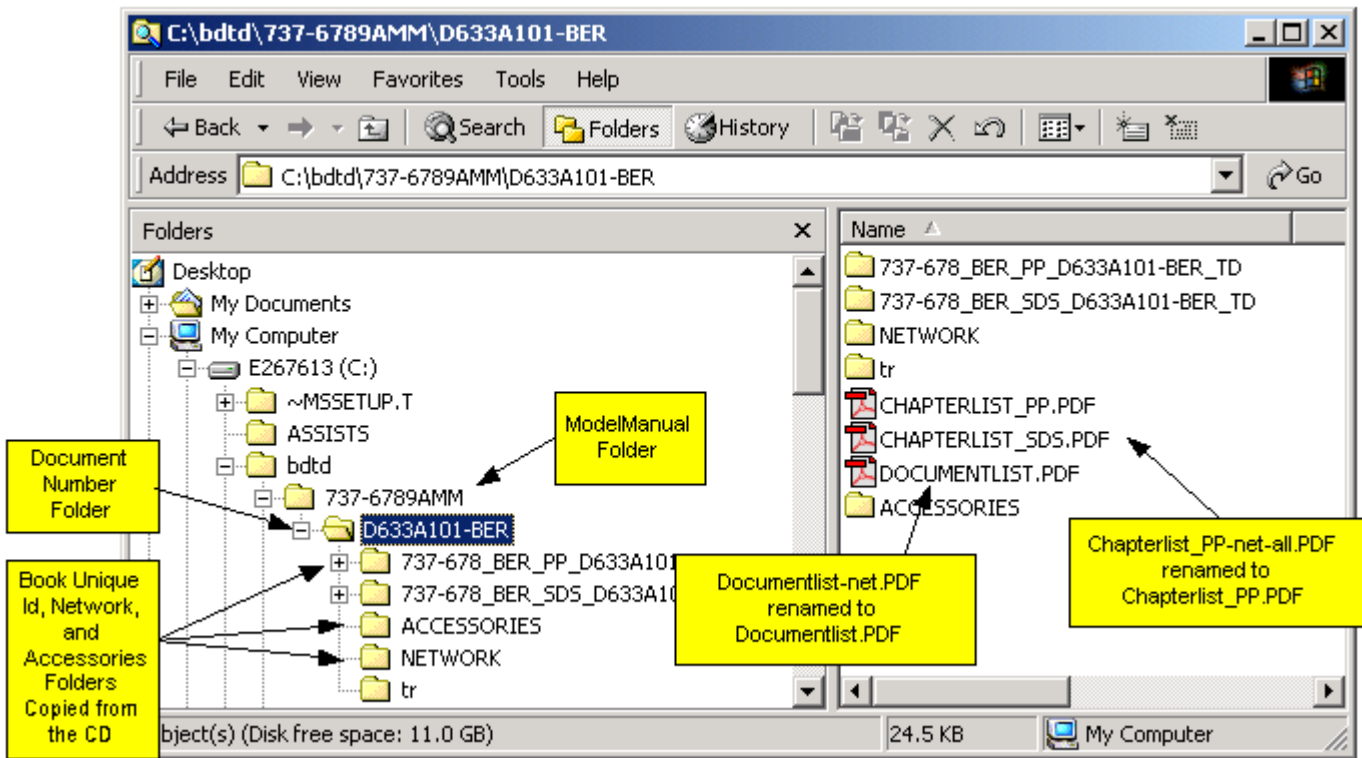


Figure 10